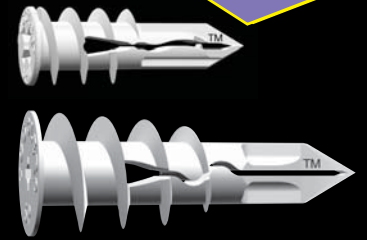


TOGGLER[®] High Performance Self-Drilling Drywall Anchors

SnapSkru[®] MINI SPM[™]
SnapSkru[®] SP[™]

NEW



The SnapSkru *MINI* anchors are the **smallest & strongest** and the SnapSkru regular anchors are the **highest performing** self-drilling drywall anchors available.

Benefits of SnapSkru Anchors

- Work with a range of screw sizes—
 MINI = #6 (recommended) - #8
 Regular = #6 - #8 (recommended) - #10
- Built-in positive stop resists overdrilling
- Can remove screw & item, leaving anchor in wall for reuse
- Work in walls *and* ceilings
- Audible “pop” indicates correct install
- Resist vibration & shock

SnapSkru Holding Power

Holds **80% more**
than the competition

MINI SPM



Regular SP

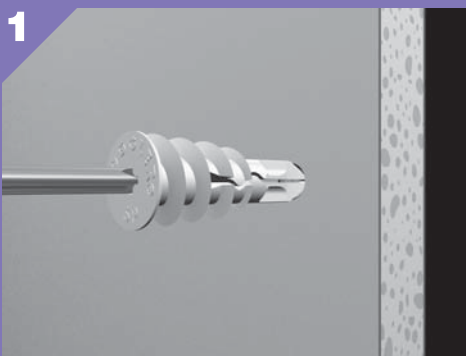


in 5/8" drywall*

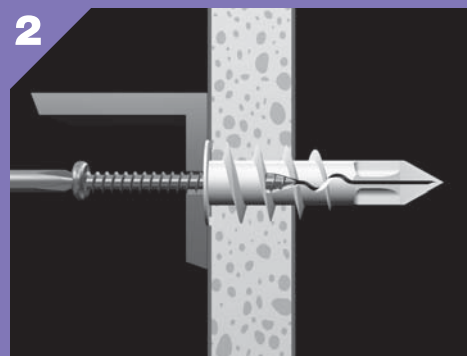
Applications

Securely hang bathroom accessories, mirrors, picture frames, lighting fixtures, drapery, smoke detectors, alarms, thermostats, electric boxes, shelving...

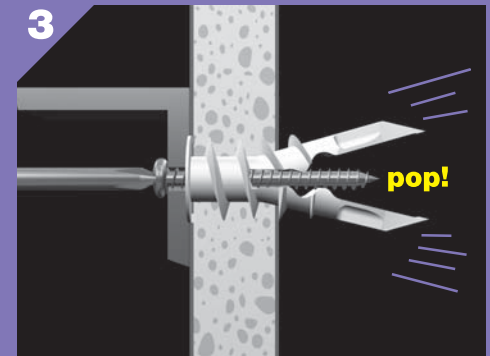
Instructions



Press tip of SnapSkru anchor into drywall using #2 Phillips screwdriver or screw gun. Drive anchor clockwise into drywall until anchor stops flush with wall.

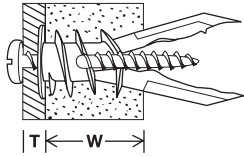


Place item over anchor and insert screw.

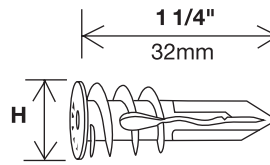


Tighten screw flush with item. Screw “pops” open anchor, locking anchor on wall.

SnapSkrus MINI Anchor Specifications:



(T) Item thickness
Max. 1/2" (13mm) with
1 1/4" (32mm) screw
 Thicker items: use longer screw
(W) Wall thickness
Min. 3/8" (10mm)
Max. 5/8" (16mm)



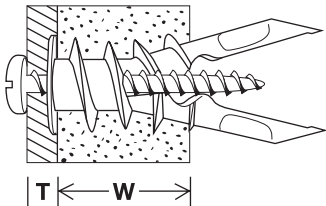
#6 - #8 #6 preferred
 Ø 3.5-4mm
S = Item thickness + 1" (25mm)
H = 0.4" dia. (Ø11mm)

Holding values (Ultimate Loads)

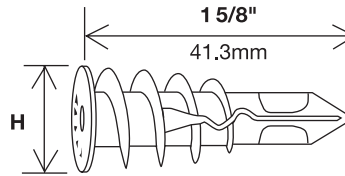
| Drywall thickness | Tensile | Shear |
|----------------------|-------------------------|--------------------------|
| 3/8" (9.5mm) | 57 lbs (25.8 kg) | 105 lbs (47.6 kg) |
| 1/2" (12.5mm) | 65 lbs (29.5 kg) | 131 lbs (59.4 kg) |
| 5/8" (16mm) | 95 lbs (43.0 kg) | 175 lbs (79.4 kg) |

*Holding Values: Per anchor with #6 x 1 1/4" screws • Industry standard safe holding = 1/4 of ultimate load

SnapSkrus Regular Anchor Specifications:



(T) Item thickness
Max. 3/4" (19mm) with
1 1/2" (38mm) screw
 Thicker items: use longer screw
(W) Wall thickness
Min. 3/8" (10mm)
Max. 5/8" (16mm)



#6 - #10 #8 preferred
 Ø 3.5-4.5mm
S = Item thickness + 1 1/4" (32mm)
H = 0.6" dia. (Ø16mm)

Holding values (Ultimate Loads)

| Drywall thickness | Tensile | Shear |
|----------------------|--------------------------|--------------------------|
| 3/8" (9.5mm) | 57 lbs (25.8 kg) | 108 lbs (49.0 kg) |
| 1/2" (12.5mm) | 79 lbs (35.8 kg) | 149 lbs (67.4 kg) |
| 5/8" (16mm) | 135 lbs (61.2 kg) | 178 lbs (80.7 kg) |

*Holding Values: Per anchor with #8 x 1 1/2" screws • Industry standard safe holding = 1/4 of ultimate load

For more information: www.toggler.com

SATISFACTION GUARANTEED

If any TOGGLER® BRAND anchor fails to perform to your satisfaction, please send us the sales receipt together with any unused anchors for a full refund. We welcome your comments. This guarantee is not to be construed as conferring any liability beyond the purchase price of the product.

Made in USA



TOGGLER ANCHOR SYSTEM
 Div. of Mechanical Plastics Corp.
 444 Saw Mill River Road
 Elmsford, NY 10523 USA
 Tel: 914-347-2727
 Fax: 914-347-3634
www.toggler.com
 E-mail: info@toggler.com